



2025-2026 ANNUAL REPORT



Table of Contents

REPORTS

Our Board and Staff.....	3
Our Partners/Collaborators/Funders.....	4
From the NHEHDY President.....	5
From Our Co-Executive Directors.....	6
In Memory of Lisa Snyder.....	8

Partners for Children

Parenting Groups.....	9
Partners for Children Family Place.....	11
From Our Family Programs Facilitators.....	12

Thank You.....	15
-----------------------	-----------

Summary of Meetings/Conferences etc.....	16
---	-----------

NHEHDY Activities.....	17
-------------------------------	-----------

FINANCIAL STATEMENTS

Notes to Financial Statements.....	18
Financial Statements.....	19

OUR BOARD AND STAFF

Officers and Directors

- Tanja Westland, President
- Laurie Parker, Secretary
- Stephanie Davidson, Director at Large
- Tara Wheeler, Vice-President (stepped down Dec 2025) - position remained vacant after
- Lisa Snyder, Treasurer (until Dec 2025) - position remained vacant after

Staff

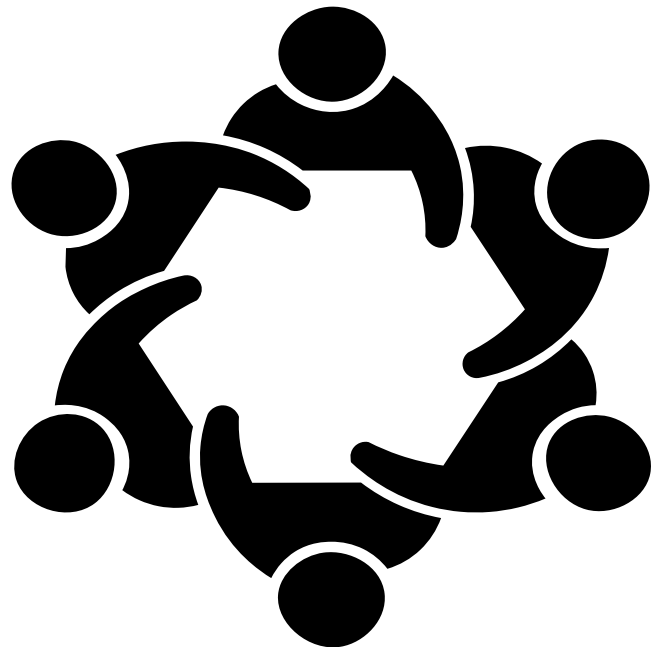
- Rebecca Fenton, Co-Executive Director
- Katie Swales, Co-Executive Director
- Cai Krikorian, Family Programs Facilitator
- Kathryn Grimmett, Family Programs Facilitator

Contractors

- Lucie Llamas Bravo, Romp N Run Coordinator (starting January 2026)
- Jessica Condon, Romp N Run Coordinator (starting September 2024)
- Karin Voogd, Romp N Run Facilitator and Kids in the Kitchen Facilitator
- Karolina Bacon, Romp N Run Facilitator
- Raven Padmos Romp N Run Facilitator
- Valeria Duimovich, Romp N Run Facilitator
- Lionel Pelecyn, Romp N Run Facilitator
- Marianne Nowicki, Romp N Run Facilitator
- Heiko Haehnsen, Romp N Run Facilitator
- Elaine Ni Churraín, Romp N Run Facilitator
- Learnbase Training Technology Inc., Quality Roots
- Techbase Ltd., Quality Roots
- Jody MacGillivray, PFC newsletter
- Diane Stewart, Bookkeeper
- Lisa Snyder, Bookkeeper (until December 2025)

Volunteer

- Karen Shearer, Family Place



OUR PARTNERS/FUNDERS/COLLABORATORS

Partners for Children:



Delivery Partners:



Funded By:



Other Important Partnerships and Collaborations:

- Canadian Association for Young Children (CAYC)
- CAPC and CPNP National Leads
- Cloudberry Wellness
- Early Learning Program Support (ELPS) – Child Development Centre
- Hospice Yukon
- Learning Disabilities Association of Yukon
- Parent Child Mother Goose National Council and Vermont Square
- Yukon CPNP and CAPC Programs in Whitehorse and Rural Communities
- Yukon First Nation Education Directorate
- Yukon Government Early Learning and Child Care Branch
- Yukon Government Family Resource Unit
- Yukon Government Family Resource Unit Advisory Committee

From the NHEHDY President



It has been another productive year for NHEHDY as we continue to support families, strengthen partnerships, and advocate for healthy early childhood development across Yukon.

Our Family Place remains a vibrant and well-used community resource, with strong participation in Parent-Child Mother Goose programs, infant massage, sleep consultant visits, and other family-centered activities. We are pleased to see continued demand for these services and remain committed to providing welcoming and accessible supports for families.

Throughout the year, NHEHDY delivered a variety of family programs in Whitehorse and maintained strong collaborative relationships with local and remote community partners. We are grateful for the ongoing support and engagement of organizations that share our commitment to children and families.

A significant milestone this year was the successful transition to CAPCHP funding through the Public Health Agency of Canada. While funding levels remain unchanged, securing continued federal support ensures the sustainability of many of our core programs.

The Quality Roots Project remained a key focus this year, supporting quality improvement and professional reflection within Yukon's early learning and child care sector. Work also continued on several other long-term initiatives, including the Healthy Beginnings Guide, professional development opportunities, and ongoing advocacy efforts that support Yukon children, families, and educators.

This year was also marked by the sudden loss of our board member, Lisa Snyder. Lisa was bright, thoughtful, reliable, and deeply committed to her community. She had a dry wit, a practical perspective, and a talent for bringing clarity to discussions. Her presence on our board was greatly valued, and her contributions to NHEHDY and the broader community will have a lasting impact. She is deeply missed.

I would like to thank our staff, contractors, volunteers, board members, funders, and community partners for their dedication and contributions throughout the year. Their passion and hard work continue to make a meaningful difference in the lives of Yukon children and families.

As we look ahead, NHEHDY remains focused on collaboration, innovation, and ensuring that families across Yukon have access to the supports and services they need to thrive.

Respectfully submitted,
Tanja Westland
President, NHEHDY



From our Co-Executive Directors

It is honestly hard to believe that another year has passed us by. We always enjoying putting this report together as it allows us to reflect on how much NHEHDY has accomplished over the year.



This year we continued to deliver the Partners for Children program with funding from the Public Health Agency of Canada and the Yukon Government (Health and Social Services. Programming included offering several parenting programs: Parent-Child Mother Goose Program, You and Your Baby, Infant Massage and the Nobody’s Perfect Parenting Program. We offered a Dad’s Nobody’s Perfect Parenting group with the Family Literacy Centre. Throughout the year we were able to offer several intergenerational Parent Child Mother Goose programs at Whistle Bend Place and Normandy Living. We also began facilitating again with the Whitehorse Health Centre and are grateful for that continued partnership. A new partnership was formed with the Nest Parenting Group for 2SLGBTQIA+ families.


Partners for Children Family Place was also open four days a week throughout the year, including Sundays. We continued to offer Mini Mother Goose sessions two days a week in Family Place and also had several guests throughout the year - Jen Freeman, Child Development Centre; Shayla from a good night co.; a public health nurse; and Sofia, Happy V Project. Cai also offered some Cello Chill sessions. In May 2025 we offered an evening get together for parents to chat about being outdoors with their children and camping and in November we attended a Tobogganing Friday event offered by the City of Whitehorse. We also had the opportunity to participate in some CYFN Family Preservation Wellness Fairs.

Staff remained fairly steady throughout the year, but in December 2025 we said goodbye to Jessica Condon, our Haines Junction Romp N Run Coordinator and welcomed Lucie Llamas Bravo to the position.



Our Quality Roots program online tool which was launched in Feb 2025 remained operational throughout the year, but due to a lack of program funding it was not possible to engage with or provide ELCC programs and staff, although we continued to field questions and generate interest in the program.

This year we published three Partners for Children newsletters - Spring 2025, Fall 2025 and Winter 2026. We also completed revisions on our Healthy Beginnings Guide which was published and distributed in the Fall of 2025. It is also available to see and download on our website. This year we also completed our re-application for funding through the new PHAC Community Action for Prenatal and Child Health Program (CAPCHP), which as of April 1st, 2026 has replaced the CAPC and CPNP program structure. Although we were successful in receiving continued funding until 2030, this funding amount has not seen an increase since the Partners for Children program started in 1994.




Healthy Beginnings

A Resource Guide For Yukon Families with Young Children

Web version – smaller resolution with limited images. Hard copy may be available – contact us.

Cost: \$5.00 (but coming to you free of charge)

Network for Healthy Early Human Development Yukon
nhehd yukon@gmail.com
 Fall 2025



PARTNERS FOR CHILDREN

SPRING | 2 0 2 5

Thank You!

Thank you so much to all of you that completed our survey. You provided us with some great information about challenges for parents of young children and gaps in services in the Yukon. You also provided some feedback on the services that we currently offer. We thought that we would share some of those.

"Great to meet other moms with same age babes. Very welcoming. Something to look forward to."

"Innumerable and lifelong." **"A place to meet new mama's and to meet each other exactly when we are at each day. It was great and my favourite group of the week. A very special group!"**

"Mother Goose has helped my child socialize and helped everyone in the family with shape changing, transitions, boredom etc. Thank you!" **"It's made going through postpartum a lot easier. Don't know what it would have been like without all the programming."**


"A tremendous impact. It has given me the confidence to leave the house with my baby and to learn how to do life in this new way."

"This organization has honestly been the primary support system for me during both of my maternity leaves. With my first, it was during COVID and Partners for Children was the ONLY programming we were able to experience, and it was a lifeline during an extremely isolating time, when my family couldn't travel to visit. Having returned to work, the weekend drop-in hours provide continuity for my children and for myself. It's not an exaggeration to say that in many ways, Partners for Children was lifesaving."

"It was a community that I really needed."

"There are few places in Whitehorse with such low barriers to access for parents of young children. It made me feel a part of the community that I belong, and that me and my baby are welcome."

More information about Partners for Children on page 22 and 23.



www.partnersforchildren.info

We would very much like to thank our small but mighty staff and team of contractors who provide fantastic programs and supports to families of young children in the Yukon. We would also like to thank our NHEHDY Board of Directors for their continued input and support. And a big thank you to our funders and to those who partnered and collaborated with us throughout the year. And last, but definitely not least, we would like to thank all of the families who come out to our groups and to Partners for Children Family Place.



In Memory of..

In January 2026, we sadly and unexpectedly lost our NHEHDY Board Treasurer and former bookkeeper, Lisa Snyder. Lisa had been supporting the financial aspects of the organization since it was formed in 2014. Not only did we lose a dedicated bookkeeper and colleague, but a friend and long time supporter of the work that we do.

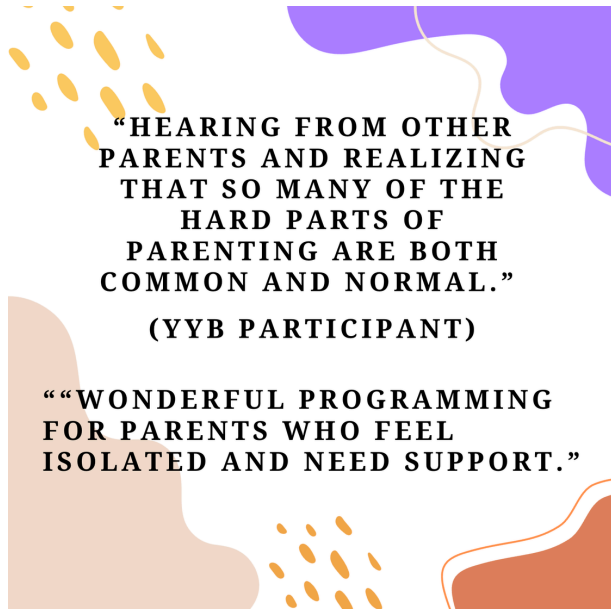
We continue to try to understand and complete all the tasks that Lisa did and frequently wish we could ask her a question! We are appreciative of Diane Stewart who has taken on a greater role in helping us with our finances and CRA reporting. Lisa left big shoes to fill.



Partners for Children

Parenting Groups

Our Parenting Groups continued to be immensely popular, and this year we delivered more than ever before. All groups were full. Our Haines Junction Romp N Run program also continued to be very popular.



In the 25-26 fiscal year we delivered:

- **7 Parent-Child Mother Goose groups** (total of 55 sessions). Our partners were the the Healthy Babies Healthy Futures program at Victoria Faulkner Women’s Centre, Yukon Literacy Coalition, Whistle Bend Place and Normandy Living. Six of these were Intergenerational groups.
- **6 You and Your Baby groups** (total of 36 sessions). Our partners were the Yukon Literacy Coalition, Healthy Babies Healthy Futures program at Victoria Faulkner Women’s Centre and Whitehorse Health Centre.
- **4 Infant Massage groups** (total of 20 sessions). Two groups were offered in-house. For the other two we partnered with the Skookum Jim Friendship Centre CPNP program, and Healthy Babies Healthy Futures program at Victoria Faulkner Women’s Centre.
- **2 Nobody’s Perfect Parenting Groups** (12 sessions). One was for Dads and delivered with the Yukon Literacy Coalition. The other was delivered in-house.
- **3 Seasons of Romp N Run groups in Haines Junction** (total of 68 sessions). Several community facilitators provided the programming for these groups, along with staff from several organizations like the Yukon First Nation Education Directorate, Yukon Literacy Coalition and the Public Library. Special events were held in June to celebrate year end, at Halloween and Christmas.

PARTNERS FOR CHILDREN

PARENTING GROUPS

2025 - 2026

PARENT CHILD MOTHER GOOSE PROGRAM

56 *132* *118*

Elders/Seniors

Children

Parents / Caregivers

70 **YOU AND YOUR BABY** *69*

Children

Parents / Caregivers

44 **INFANT MASSAGE** *45*

Children

Parents / Caregivers

16 **NOBODY'S PERFECT** *16*

Children

Parents / Caregivers

HAINES JUNCTION ROMP N RUN

(# of participants for each session)

22-23 *15-19*

Children

Parents / Caregivers

Partners for Children Family Place

With funding from Health and Social Services at the Yukon Government we were able to continue to operate our Partners for Children Family Place this fiscal year. We were open to the public 4 days each week including Sundays.

In terms of visits to Family Place we had:

- Spring/Summer 2025 - 485 parent and 547 child visits
- Fall 2025 – 910 parent and 991 child visits
- Winter 2026 – 785 parent and 854 child visits

Mini-Mother Goose Drop-In Sessions:

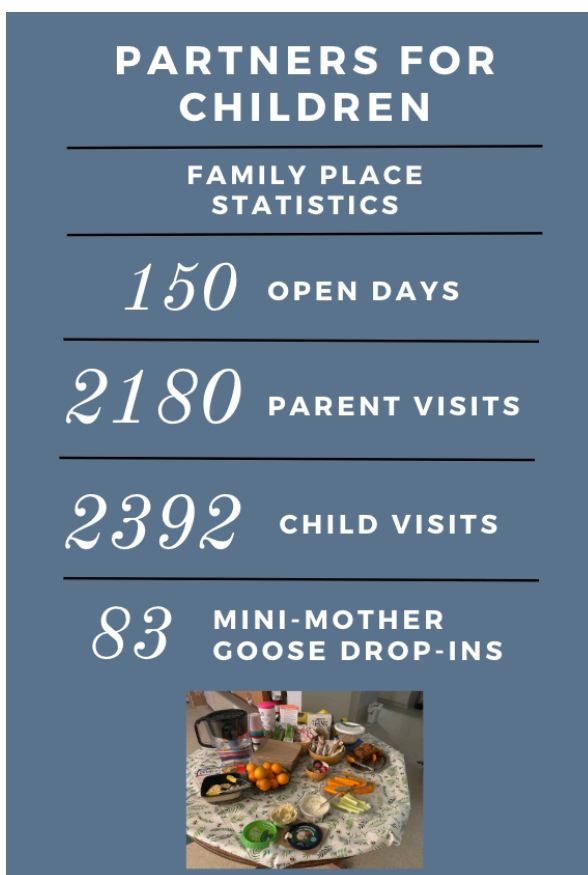
- Spring 2025 - 23
- Fall 2025 – 39
- Winter 2026 – 21

Kathryn and Cai filmed themselves each week singing a song to draw attention to the PCMG drop-in sessions. They were very popular and had many views.

Visitors/Guests to Family Place:

- Shayla Roulston, A Good Night Sleep Co. (8 sessions)
- Jen Freeman – Child Development Centre (2 sessions)
- Sofia Ashley - The Happy V Project (1 session)
- Victoria - Family Literacy Centre (1 session)
- Whitehorse Health Centre (1 session)

We also offered 5 Cello and Chill with Cai sessions on Mondays during the year.



From Our Family Program Facilitators



Partners for Children Registered Programming:

Our registered programming was consistently full and the programs we offered were responsive to the community needs. Parents often shared that our registered programs, especially You and Your Baby and Infant Massage, were the first time they left the house with their baby on their own. New parents shared that our welcoming space and consistent non-judgemental environment was important to their mental health. This was especially true for single parents and parents struggling postpartum. New parents also shared that our registered programs gave them the confidence to continue to get out of the house, build friendships with other new parents and build their own social support network. Exchanging of contact information between parents is incredibly common throughout these programs.

Our registered programming continued to strengthen community partnerships. We partnered with the Whitehorse Health Centre for both You and Your Baby and Infant Massage. This was a successful partnership with parents getting to know both our programs and the health nurses. Parents were able to ask health nurses specific questions and the information helped relieve anxiety and clear up misinformation that new parents were seeing on social media. The health nurses shared that it was beneficial for them to have consistent time with new parents that isn't focused around the stress of giving vaccinations that make the baby cry.

We partnered with Canadian Mental Health Association Yukon with You and Your Baby. This was a positive partnership and connected new parents to other mental health supports within our community.

We partnered with Healthy Babies Healthy Futures, offering Parent Child Mother Goose, You and Your Baby, and Infant Massage. We partnered with Skookum Jim offering Infant Massage. These partnerships were successful to share resources and help new parents become familiar with different community programming, as many of the families brought to these programs by our partner organizations ended up regularly attending other programming.

We partnered with the Family Literacy Centre in offering a dad specific Nobody's Perfect Parenting Program. This was offered in the Fall and was very successful. This was another area that families were noticing that there was a lack of dad specific programming. Dads appreciated the space to talk openly about their struggles and to have fun with their babies and have a place to go to and meet other dads.

The Family Literacy Centre also partnered with us to offer an intergenerational Parent-Child Mother Goose program at Normandy Living. Along with another intergenerational Parent-Child Mother Goose program at Whistle Bend Place, we found success in these programs that provided joy to both the families and the seniors that attended. These programs were offered in residential areas that allowed people to easily attend, especially those who did not have access to a vehicle. After each session ended both the parents and seniors were eager to register for the next session, and we were able to run programs in both locations throughout the Spring, Fall and Winter. Future planning is to continue to offer these registered programs with our community partners, building on the successes of this last year.

Partners for Children Family Place:

Running most weeks on Sundays, Mondays, Thursdays, and Fridays, our Family Place Drop-In programming was regularly attended with high numbers. Parents said that drop in was an important space for their mental health and connecting with other new parents. Families shared that our consistent schedule was important to them, they liked that each week was the same schedule and that we rarely closed or varied from that schedule. The predictability in our schedule allowed families to plan us into their weekly schedule, to pop in when they needed a safe place to land while out and about, or to come in when they were feeling cooped up and disconnected at home.

Aside from the drop-in play space, resource wall, lending library, and the snacks, coffee, and tea that are available during regular drop-in hours, we also offered regular drop-in programming at PFC Family Place.

Parents really enjoyed our two options for Drop-In Mini Mother Goose programs, on Thursdays 10:30 – 11:30 and Fridays 1 – 2. They said they like knowing that regardless of their baby's changing nap schedule they wouldn't miss out on songs with their babies. Many families also noted that they felt more relaxed with their arrival time at the drop-in Mini Mother Goose sessions as they knew they could stay late and play if they only caught the last half of the session.

We also offered monthly large group drop-in sessions with Shayla, a local sleep consultant who focuses on a biological, developmental, and attachment focused framework that is central to supporting parents who are not sleep training. Parents appreciated Shayla's warm support and information about infant and child sleep. Parents would come with their specific questions for Shayla or just listen to the suggestions Shayla was offering.

When Cai had the capacity, we offered occasional drop-in cello listening sessions for families that were quite popular. Cai would play music for families, introducing children to the sounds and feelings of the instrument. These sessions were popular but required both of us in the space as Kathryn would have to take care of the families, space, snacks, and food, while Cai played.

Our Sunday drop-in was very important for working parents to come and connect and continue the sense of community that they had when their babies were little. This was especially important

for single parents or parents whose partner's worked shift work and the weekends were a stressful time for them with their young children. Throughout the winter Sundays were quite busy as we are the only free, warm place to play for families with children 6 and under open that day.

Our drop-in program partnered with the Nest Parenting group at Queer Yukon. We held two Families Under the Rainbow events for 2SLGBTQ+ families and allies. Parents shared that this type of programming is not currently happening in our community and they want these events to continue. Future planning is to co-host these events twice a year.

Future planning is to continue to maintain a regular weekly schedule that does not change throughout the year. We plan to continue to have Shayla in, when her schedule allows. We will continue to have regular drop-in Mini Parent Child Mother Goose.



Sleep Consultant Shayla Roulston's April visit to the Family Place is this Monday, April 13th, from 12pm to 2pm.

Come ask your infant and toddler sleep questions, share your concerns, and get Shayla's perspective.



THANK YOU!

We would like to say a special thank you to the Whitehorse Lion's Club for their generous financial support which helped us deliver 3 Parent-Child Mother Goose Program groups. They also donated and mounted a fantastic white board in Partners for Children Family Place.



We would also like to thank a very generous supporter of our programs who has provided us with the means to turn the 108 Copper Rd backyard into a usable child friendly fun and relaxing space which will benefit visitors to both Partners for Children and Autism Yukon. Watch for pictures of the transformation in the Fall.



SUMMARY OF MEETINGS, CONFERENCES etc.

REGULAR MEETINGS WE ATTENDED (Committees we sat on)

- Parent Child Mother Goose National Council (one of NHEHD ED's was co-chair until November 2025)
- The Canadian Association for Young Children (CAYC)
- Family Resource Unit Advisory Committee(Yukon Government)
- National CAPC/CPNP Lead Meetings
- Yukon CAPC/CPNP Program Meetings
- ELCC Technical Advisory Meeting
- Partners for Children Staff Meetings

EVENTS/CONFERENCES/TRAININGS/MEETINGS WE PARTICIPATED IN:

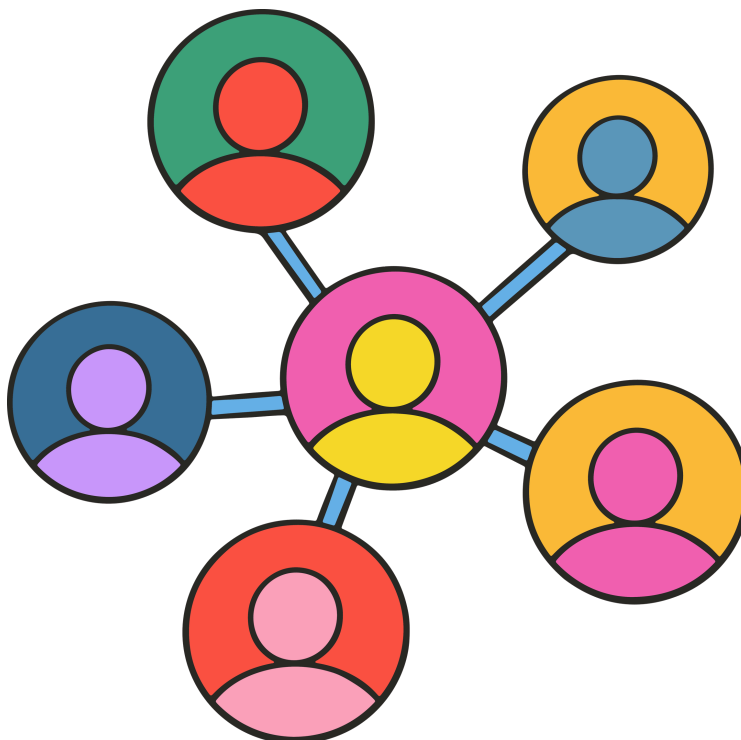
- CYFN Wellness Fairs
- Parent Child Mother Goose National Council AGM
- Parent Child Mother Goose Program National Council Connection Series
- The Canadian Association for Young Children AGM
- CDC TPOT TIPTOS Celebration
- Yukon ELCC Implementation Committee

PROJECTS WE PARTICIPATED IN:

- CAYC National Conference Preparation

TRAININGS TAKEN THIS YEAR:

- Mothers Toolkit Training - Cai (Jan 2026)



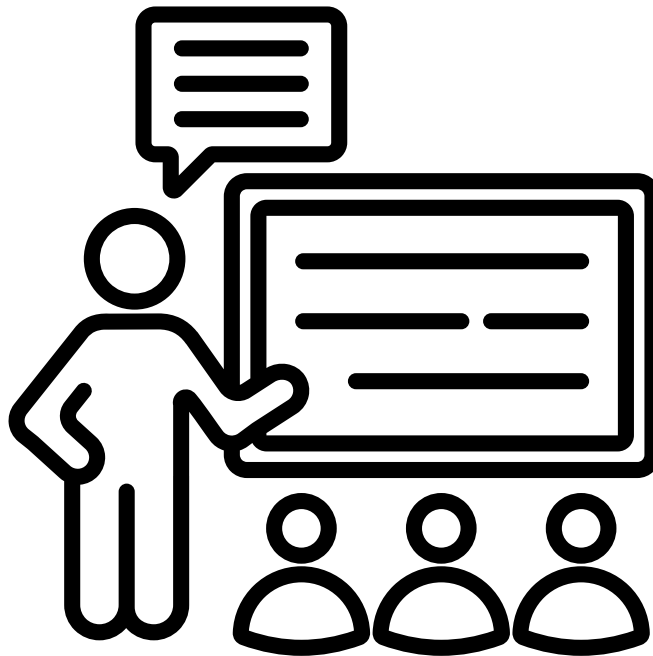
NHEHDY ACTIVITIES

NHEHDY had the opportunity to complete some other contracts this year.

October 2025 Delivered a full-day training to Transitional Support Workers (group home) on child development from birth to 12 years of age.

January 2026 Delivered a full-day training to Transitional Support Workers (group home) on child development from birth to 12 years of age.

March 2026 Delivered a half day morning vision planning session with a local daycare.



NOTES TO FINANCIAL STATEMENTS

Accounts

On the following page the NHEHDY's financial statements can be found as prepared by our bookkeeper Diane Stewart. NHEHDY contracts a bookkeeper throughout the year. This year we are having a financial compilation completed by a CPA. This is currently being completed so the attached are presented as unreviewed by a CPA documents.

Assets

NHEHDY's assets are limited to our cash in the bank and the equipment/furniture we have on site in offices and programming space. Government funded non-profits in the Yukon are limited as far as what they can accrue as assets as our agreements indicate that any unused money in any fiscal year may be considered unnecessary and affect future agreements.

Liabilities

NHEHDY does not have a debt. For a more detailed description of our liabilities, please see the financial report.

Network for Healthy Early Human Development Yukon Income Statement 04/01/2025 to 03/31/2026

REVENUE

Revenue	
Funding	295,649.00
Donations	3,720.00
Reimbursements	20.00
Fees	11,220.50
Net Sales	310,609.50

TOTAL REVENUE 310,609.50

EXPENSE

Payroll Expenses	
Wages & Salaries	189,328.26
EI Expense	4,021.30
CPP Expense	9,644.82
Employee Benefits	11,463.09
Total Payroll Expense	214,457.47

General & Administrative Expe...

Advertising & Marketing	-285.60
Bank Charges & Interest	405.55
Insurance	6,212.48
Membership, Licenses and Dues	391.00
Furniture and equipment	400.00
Office Expenses	2,281.93
Office Equipment	484.31
Project Materials	5,916.89
Resource Library	109.51
Printing	5,334.24
Rent	50,430.00
Repair & Maintenance	1,632.72
Sub Contractor	30,911.50
Postage	876.23
Telephone, internet, network	16,705.50
Training	259.00
Travel	2,181.34
Transportation	43.72
Meals	21.15
Workshop Food	9,407.72
Utilities	22,504.67

Total General & Admin. Expen... 156,223.86

TOTAL EXPENSE 370,681.33

NET INCOME -60,071.83

Network for Healthy Early Human Development Yukc Balance Sheet As at 03/31/2026

ASSET

Current Assets

Chequing Bank Account	33,892.19	
Total Cash		33,892.19
Receivable other	-118.13	
Total Receivable		-118.13

Total Current Assets 33,774.06

Capital Assets

Leasehold Improvements		25,508.57
Accum Amort - Leasehold impro...		-2,550.86
Office Furniture & Equipment	4,607.48	
Accum. Amort. -Furn. & Equip.	-460.75	
Net - Furniture & Equipment		4,146.73

Total Capital Assets 27,104.44

TOTAL ASSET 60,878.50

LIABILITY

Current Liabilities

Accounts Payable		9,603.91
Accrued payables		10,225.45
Vacation payable		13,162.45
Wages Payable		29,339.88
EI Payable	3,087.21	
CPP Payable	7,860.53	
Federal Income Tax Payable	-1,781.26	
Total Receiver General		9,166.48
GST/HST Paid on Purchases	-12,159.82	
GST/HST Owing (Refund)		-12,159.82

Total Current Liabilities 59,338.35

TOTAL LIABILITY 59,338.35

EQUITY

Owners Equity

Deferred Revenue		10,000.00
Retained Earnings - Previous Year		51,611.98
Current Earnings		-60,071.83

Total Owners Equity 1,540.15

TOTAL EQUITY 1,540.15

LIABILITIES AND EQUITY 60,878.50

Network for Healthy Early Human Development Yukon Project Income Summary 04/01/2025 to 03/31/2026

Ac...	Account Name	Revenue	Expense
Family Resource Centre			
4020	Funding	116,667.00	
5410	Wages & Salaries		70,895.79
5420	EI Expense		1,537.58
5430	CPP Expense		3,762.35
5470	Employee Benefits		12,863.09
5625	Bank Charges & Interest		7.70
5685	Insurance		3,032.74
5690	Membership, Licenses and Dues		160.00
5695	Furniture and equipment		400.00
5700	Office Expenses		725.39
5705	Office Equipment		484.31
5710	Project Materials		3,709.11
5715	Resource Library		109.51
5720	Printing		1,955.90
5760	Rent		24,600.00
5765	Repair & Maintenance		1,632.72
5770	Sub Contractor		6,686.14
5780	Telephone, internet, network		2,195.88
5782	Training		259.00
5784	Travel		1,931.34
5785	Transportation		16.87
5788	Workshop Food		3,596.03
5790	Utilities		10,857.07
		<u>116,667.00</u>	<u>151,418.52</u>
REVENUE minus EXPENSE		-34,751.52	
Family Resource Centre - Newsletter			
5700	Office Expenses		100.21
5710	Project Materials		69.58
5720	Printing		3,378.34
5770	Sub Contractor		433.00
5775	Postage		876.23
		<u>0.00</u>	<u>4,857.36</u>
REVENUE minus EXPENSE		-4,857.36	
Family Resource Centre - Romp'n Run			
5710	Project Materials		361.48
5770	Sub Contractor		14,818.20
5784	Travel		250.00
5787	Meals		21.15
5788	Workshop Food		1,512.36
		<u>0.00</u>	<u>16,963.19</u>
REVENUE minus EXPENSE		-16,963.19	

Network for Healthy Early Human Development Yukon Project Income Summary 04/01/2025 to 03/31/2026

Ac...	Account Name	Revenue	Expense
PFC - Coordination			
4020	Funding	157,950.00	
5410	Wages & Salaries		113,903.66
5420	EI Expense		2,432.75
5430	CPP Expense		5,758.39
5625	Bank Charges & Interest		7.70
5685	Insurance		3,179.74
5700	Office Expenses		183.81
5710	Project Materials		79.54
5760	Rent		25,830.00
5770	Sub Contractor		6,833.33
5780	Telephone, internet, network		2,247.10
5785	Transportation		26.85
5788	Workshop Food		0.00
5790	Utilities		11,684.46
		<u>157,950.00</u>	<u>172,167.33</u>
REVENUE minus EXPENSE		-14,217.33	
PFC - Infant massage			
5700	Office Expenses		38.13
5710	Project Materials		368.08
5788	Workshop Food		826.26
		<u>0.00</u>	<u>1,232.47</u>
REVENUE minus EXPENSE		-1,232.47	
PFC - myb			
5700	Office Expenses		45.74
5710	Project Materials		556.63
5788	Workshop Food		1,435.06
		<u>0.00</u>	<u>2,037.43</u>
REVENUE minus EXPENSE		-2,037.43	
PFC - Nobody's Perfect (NPPP)			
5788	Workshop Food		176.35
REVENUE minus EXPENSE		-176.35	
PFC - PCMG			
5710	Project Materials		599.45
5788	Workshop Food		1,253.26
		<u>0.00</u>	<u>1,852.71</u>
REVENUE minus EXPENSE		-1,852.71	

Network for Healthy Early Human Development Yukon Project Income Summary 04/01/2025 to 03/31/2026

Ac...	Account Name	Revenue	Expense
Roots			
4020	Funding	5,622.00	
5470	Employee Benefits		-1,400.00
5615	Advertising & Marketing		-285.60
		<u>5,622.00</u>	<u>-1,685.60</u>
REVENUE minus EXPENSE		7,307.60	

Network for Healthy Early Human Development Yukon Project Income Summary 04/01/2025 to 03/31/2026

Ac...	Account Name	Revenue	Expense
NHEHD			
4040	Donations	20.00	
4060	Reimbursements	20.00	
4070	Fees	11,220.50	
5410	Wages & Salaries		4,528.81
5420	EI Expense		50.97
5430	CPP Expense		124.08
5690	Membership, Licenses and Dues		231.00
5700	Office Expenses		1,188.65
5770	Sub Contractor		1,741.52
5780	Telephone, internet, network		-37.49
5788	Workshop Food		330.15
5790	Utilities		-36.86
		<u>11,260.50</u>	<u>8,120.83</u>
REVENUE minus EXPENSE		3,139.67	
NHEHD - ESED			
4020	Funding	14,560.00	
5780	Telephone, internet, network		12,300.00
		<u>14,560.00</u>	<u>12,300.00</u>
REVENUE minus EXPENSE		2,260.00	
NHEHD - Kids in the Kitchen			
4020	Funding	850.00	
5710	Project Materials		173.02
5770	Sub Contractor		399.31
5788	Workshop Food		277.67
		<u>850.00</u>	<u>850.00</u>
REVENUE minus EXPENSE		0.00	
NHEHD - PCMG			
4040	Donations	3,700.00	
REVENUE minus EXPENSE		3,700.00	